

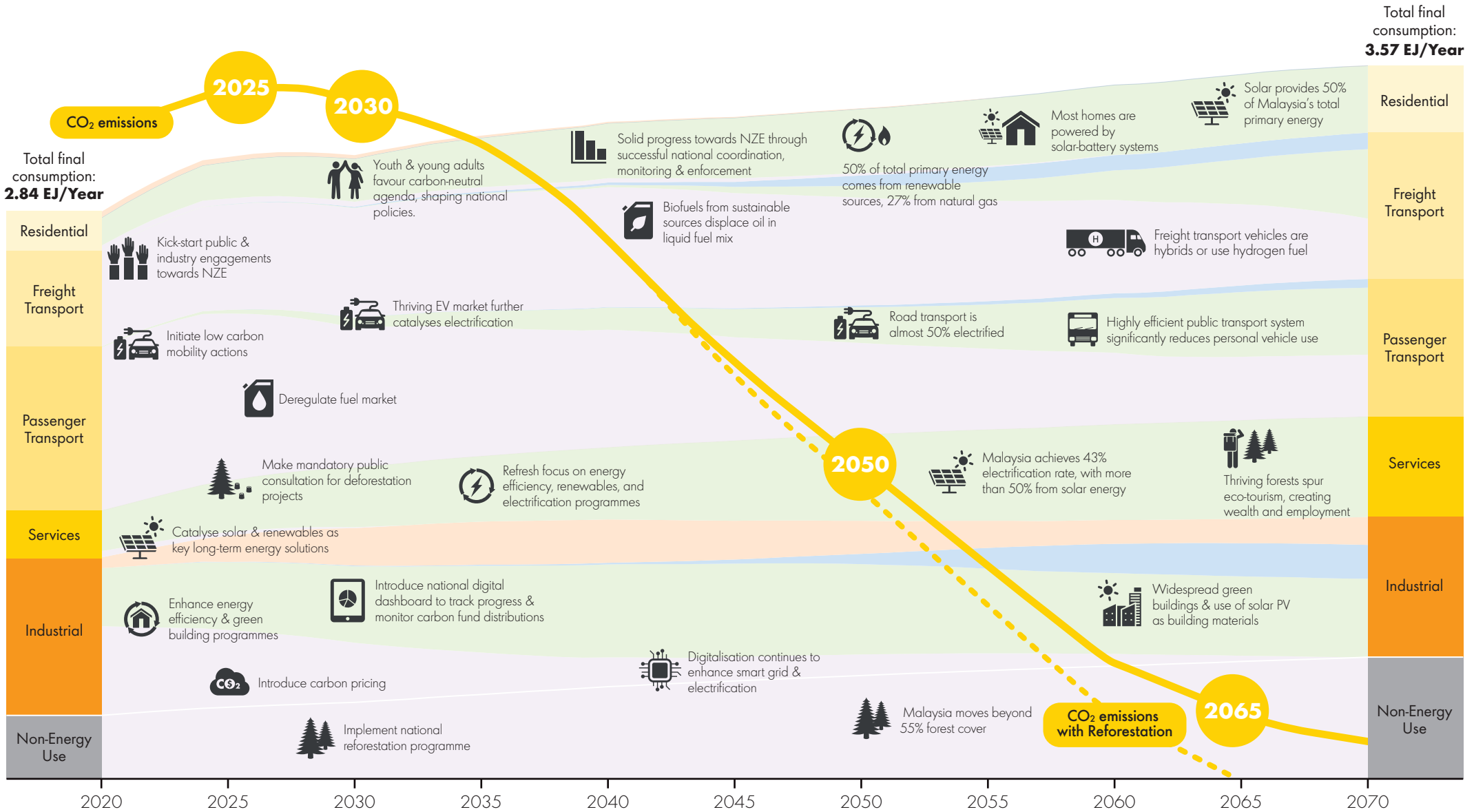
the tree, the sky, the sun

A Pathway Towards Malaysia's Carbon-Neutral Future

FINAL ENERGY FLOW IN MALAYSIA:

- Hydrocarbons
- Electricity
- Hydrogen
- Biomass

NZE: Net-zero emissions, or carbon-neutral, is the balance between anthropogenic emissions by sources and removals by sinks of greenhouse gases



To find out more, please visit: www.shell.com.my/treeskysun